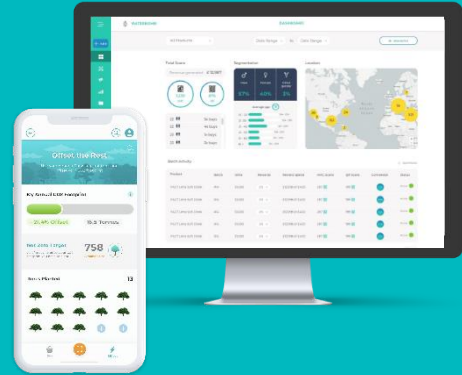


Almond Offsetting Solutions



The most advanced offsetting solution in the world



Contact: Lorenzo Curci - lorenzo@almond.org - +44 7900 82 7878



OUR PLEDGE

The carbon offset market is not working.
It is estimated that more than three quarters of all Carbon Credit schemes have had little to no impact in terms of CO2 reduction*

To fix this, in partnership with some of the world's leading ESG groups, NGOs and scientists we have created a solution that pairs nature with cutting edge technology to deliver the highest degree of impact, transparency and value for money

If you are going to offset your footprint, why not do it properly?

*'How additional is the Clean Development Mechanism?' a report by the German Institute for Applied Ecology found that 85% of offsets have a "low likelihood" of success. The 'Rights and Resources Initiative' believes it's 75%.

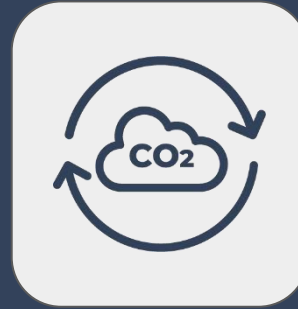
OFFSETTING SOLUTIONS



Company
Footprint



Customer
Rewards



Employee
Benefits



Travel
Assistant

We also offer tailored plans based on your specific needs

Company Footprint

In partnership with leading carbon consultancies, we provide enterprise grade solutions adapted to your every needs

Standard Projects

Offset your full company footprint

Offset the lifecycle of a product

Offset a corporate event



Customer Rewards



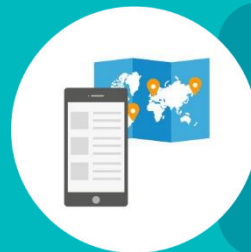
"91% of Millennials would switch brands to one associated with a cause"*

Build loyalty and grow your sales by rewarding your customers with Offset Coins each time they shop with you - online and in store. Please note that this service is reserved to brands that meet our Impact Charter (3 of 16)



COMMUNITY

Build deep and meaningful relationships by helping your customers reach Net-Zero



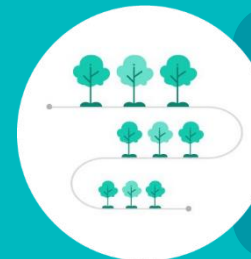
CUSTOMER INSIGHTS

Anonymised aggregated data gives you a clear profile of your customers



YOUR VALUES

Communicate your story via rich Brand and Product Pages to drive new sales



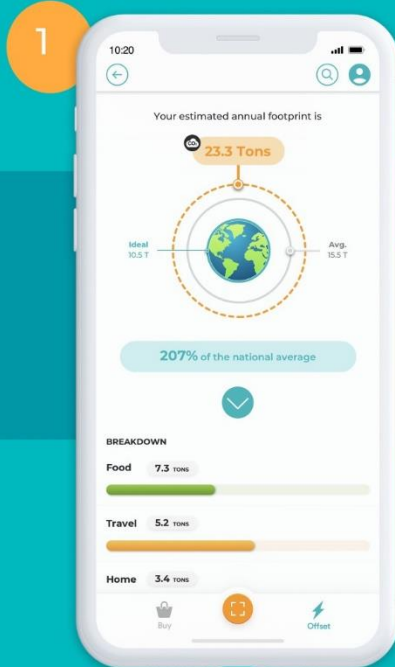
IMPACT

Visualised data enables you to beautifully communicate your impact

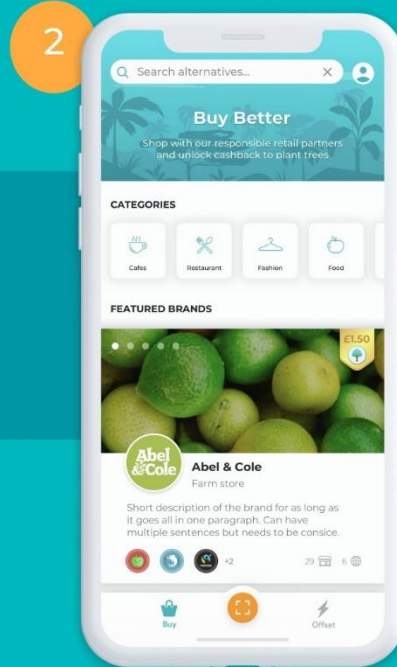
CUSTOMER EXPERIENCE



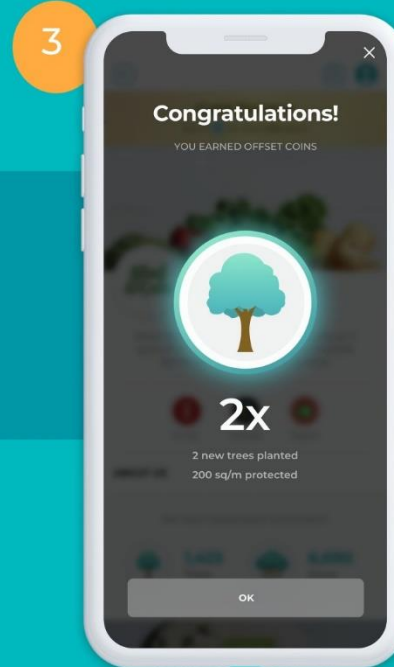
Calculates your carbon footprint in 2 mins via our chatbot



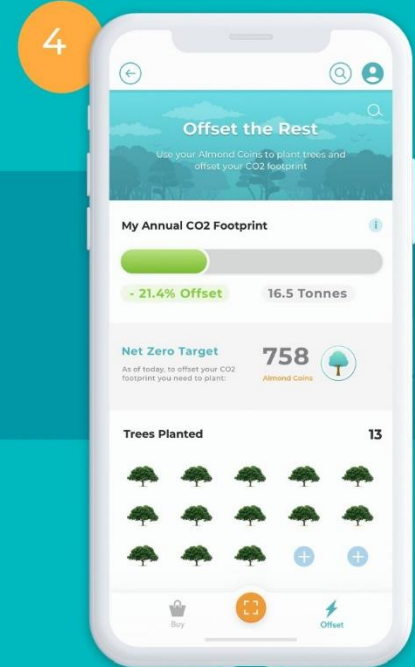
Find the most responsible brands across 15 categories



Earn 'Offset Coins' on purchases via linked bank cards or QR scans



Plant trees, protect rainforest and offset 100% of your footprint



Employee Benefits



Show your commitment and appreciation. Give your team a benefit with true purpose by offsetting their annual footprint

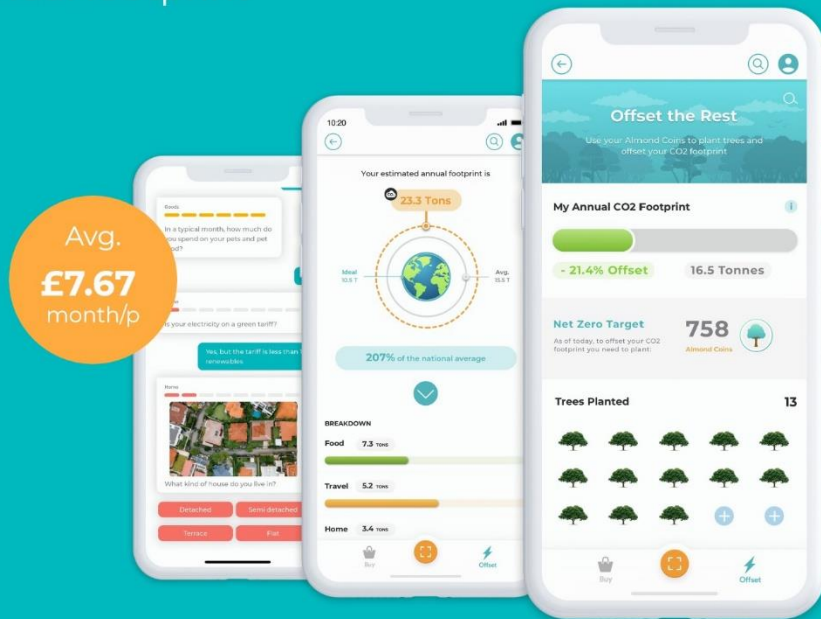
Simple Monthly Payments

Voted best perk of the year*

Help staff reach True Net Zero

Access to exclusive offers with hundreds of responsible brands

You can cap, pause or end monthly subscriptions at any time



Travel Assistant



The Almond app makes it easy to accurately track and offset business trips in just a few steps

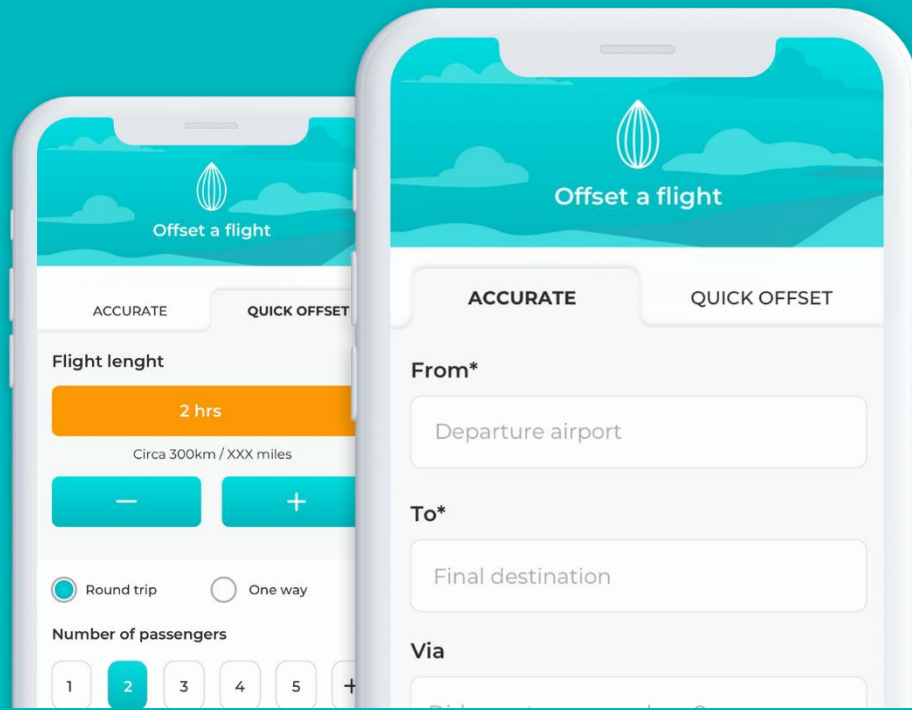
Coverage

Air, road + sea travel

Accommodation

Restaurants

You can OK or cancel payments to control staff spend





OUR GUARANTEE

IMPACT + TRUST + DATA = VALUE

IMPACT

To guarantee the effectiveness of our offsetting solutions we have created the Almond Offset Coin. A multilayered offset bundle that covers the five areas we believe are key to ensuring the immediate and long term effect of every Kg of CO₂ you offset via the Almond Network.

One Offset Coin **costs £0.20** for - **24Kgs/year** & funds the following assets:



-24Kg CO₂e / year
1 Offset Coin



1 x Tree Planted - Long term cumulative absorption value + community + ecosystem

55%



5 x Trees Protected - Maintain vital carbon sinks, support indigenous rights & biodiversity

14%



Research Fund - Fund research & high impact carbon capture technologies

7%



Advocacy Fund - Fund legal action key to preservation & decarbonisation our economies

7%



Development Fund - Support Gold Standard development projects (retires 21 kg of carbon credits)

17%

TRUST



We use blockchain technology to track and monitor the progress of every project. When you buy an Offset Coin it is automatically matched to all 5 action groups in the bundle that are themselves linked to our network of trusted partners. This triggers a step by step validation process designed to verify the execution of the action. Here is an example for tree planting:

STEP 1



Confirm the trees have
been planted

NGO

STEP 2



Your tree is assigned a
virtual grid location

Almond

STEP 3



Satellite scans grid to
verify tree is growing

Sentinel

STEP 4



Auditor makes spot
check on the ground

3rd Party

DATA



Offset Coins enable you to see and track the progress of every asset you support and demonstrate your action to your customers, employees and other stakeholders in a clear and impactful way



Follow your progress
to Offset & Net Zero



See your forest and
impact grow (API)



Get updates on the
projects you support



Grow a strong value
based community

VALUE



Whilst the cost of delivering real impact in such a transparent way puts Almond at the more expensive end of the offsetting market, focusing our action on specific projects mean that we can get you scale discounts without prejudice to the people employed by our charity partners. What is more, our 'True Net Zero' protocol means that every year your offset costs are reduced based on the carbon absorption power of the trees you plant

Cost of CO2 offset	£27.44 / Tonne	£14.90 / Tonne	£12.50 / Tonne
Specific assets	No	No	Yes
Track impact	No	No	Yes
Annual discount	No	No	Yes
	My Climate	C Level	Almond

Our Partners

Our offset partners are vetted by an independent SEG Board & sign our legally binding Impact Charter



Fund the world's most effective actors when it comes to protecting nature and reversing the effects of climate change



RAINFOREST
TRUST

PROJECT
DRAWDOWN



SOME OF OUR 50+ BRAND PARTNERS

form



ethical
superstore.com

KOMODO
THE ORIGINAL ETHICAL FASHION BRAND - SINCE 1988

Abel & Cole

Our mission is to empower 100 million people to become carbon balanced across the 10 countries responsible for 50% of global carbon emissions by 2030

Join us on this journey



ALMOND

Thank you

Contact: Lorenzo Curci - lorenzo@almond.org - +44 7900 82 7878